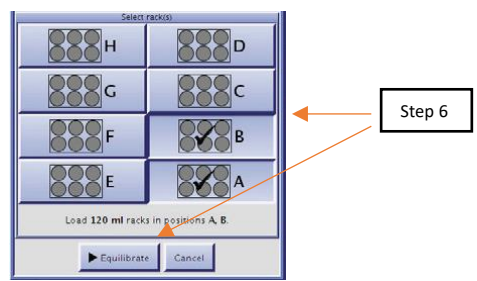
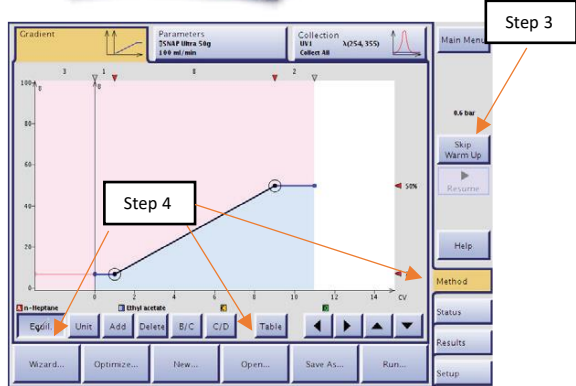
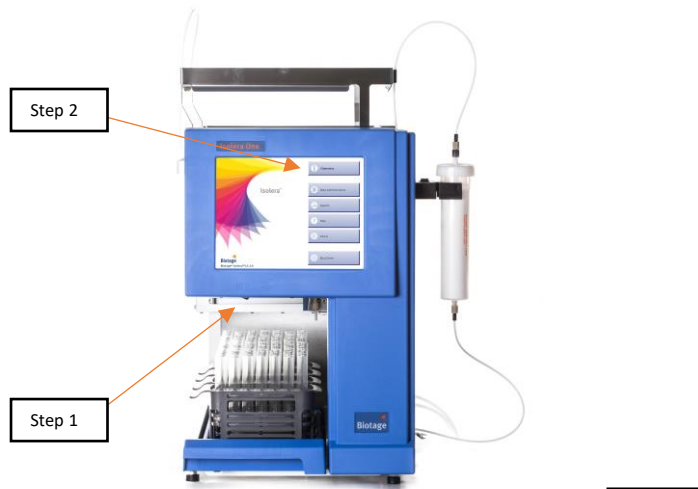


Biotage Isolera One - Quick Guide

1. Turn on the Isolera One using the switch underneath the screen.
2. Wait for the system to start and press **Chemistry**.
3. If the UV lamp is turned off, press **Turn Lamp On**. The UV lamp has a 7.5 min warm-up time.
4. At the **Method** tab, open a preconfigured method by pressing **Open...**, or use the **Wizard** to configure a custom method.
5. Load the cartridge and rack(s) onto the system. Choose a column that is approximately 10 times the mass of your sample. Ensure that the tubing is securely attached. Do not load the sample yet.
6. Press **Run...**
In the **Run Parameters** dialog, select the rack positions to be used. To start the equilibration, press ►**Equilibrate**.
7. If you have a liquid sample, inject it into the cartridge inlet using a syringe. If you have a solid sample, put this in an empty cartridge and attach that to the column cartridge.
8. When you have finished loading the sample, press **Close** and connect the inlet tubing to the cartridge's inlet.
9. Start the run by pressing ►**Gradient** at the **Status** tab.
10. At the **Status** tab you can monitor, control, and edit the run, and when it is finished, unload and clear the cartridge and rack positions. A report of the run can be exported via the USB port.



Drag the chromatogram to the desired position, select a region to magnify, etc

